



Model: **SFZ**



Model: **SFZC**  
(with Backdraft Damper)



**MATERIAL**

- Aluminum

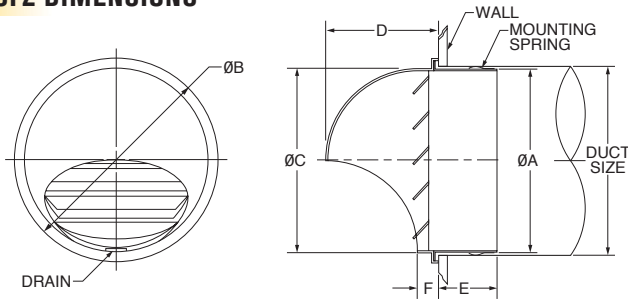
**FINISH**

- Clear Anodized
- Custom Colors Available

Exceptionally designed for exterior applications, the SFZ and the SFZC are easy to install and have large openings to reduce clogging. Both models are suited to exhaust fan applications such as dryer, bathroom, or kitchen exhaust venting. The heavy-gage anodized aluminum and stainless steel construction is corrosion-resistant for years of service.

www.seiho.com

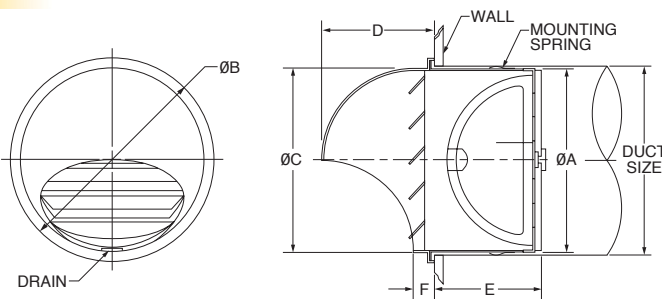
**MODEL SFZ DIMENSIONS**



MODEL	DUCT SIZE	A	B	C	D	E	F	FREE AREA
SFZ 4	4	3 13/16	4 3/4	3 25/32	2 11/16	1 9/16	9/16	0.04
SFZ 6	6	5 23/32	6 29/32	5 29/32	3 15/16	2 9/16	3/4	0.05

Product information is subject to change without notice. All dimensions in inches.

**MODEL SFZC DIMENSIONS**



MODEL	DUCT SIZE	A	B	C	D	E	F	FREE AREA
SFZ 4C	4	3 13/16	4 3/4	3 25/32	2 11/16	2 5/32	9/16	0.04
SFZ 6C	6	5 23/32	6 29/32	5 29/32	3 15/16	3 3/4	3/4	0.05

Product information is subject to change without notice. All dimensions in inches.

